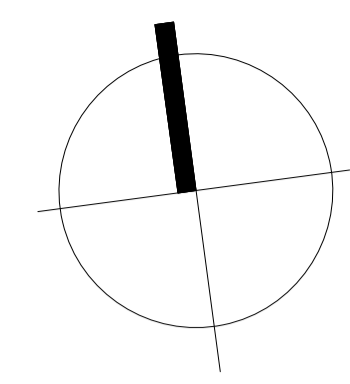
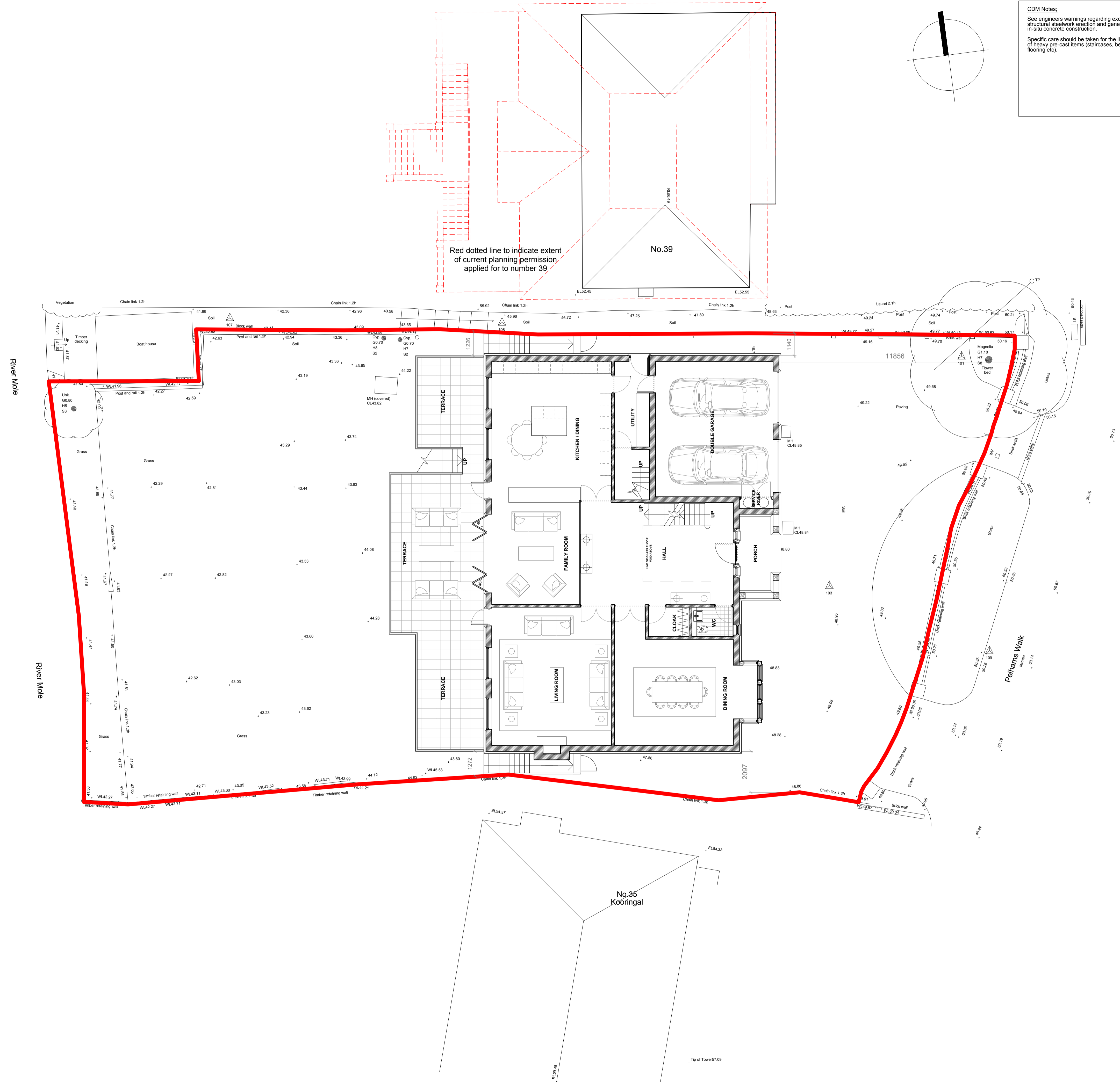


CDM Notes:
See engineers warnings regarding excavation structural steelwork erection and general in-situ concrete construction.
Specific care should be taken for the lifting and erection of heavy pre-cast items (staircases, beams and block flooring etc).

Notes
Do not scale from this drawing.
Do not fabricate any components from this drawing, all fabrications to be carried out using site dimensions only.
Any errors or omissions on this drawing are to be reported immediately.



Red dotted line to indicate extent of current planning permission applied for to number 39



A00 July 13 Planning Application.
Rev Date Chk/Dwn Issued

PLANNING ISSUE

Histon Allvey
ARCHITECTURE MASTERPLANNING & DESIGN

Grapes House, 75A High Street
Esher, Surrey KT10 8QA
Tel: 01372 485 242
Fax: 01372 220 039
e-mail: info@histonallvey.co.uk
website: www.histonallvey.co.uk
co-directors: S.Histon & R. Allvey

Project
Sycamore Developments
37 Pelhams Walk,
Esher, Surrey
KT10 8QA

Drawing Title
Proposed New Detached House
with Integral Garage.

Computer File Name

Drawn by M.J.R **Checked by** R.A.

Scale 1:100@A1 **Date** JUNE_13

Project No. HA/37PW/02 **Revision** A00

Proposed Site Plan_Scale 1:100